



# Espaces publics - La place d'armes

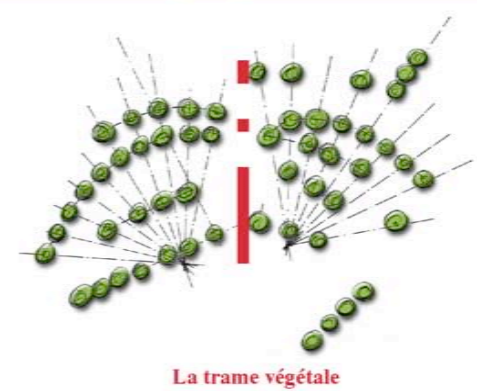
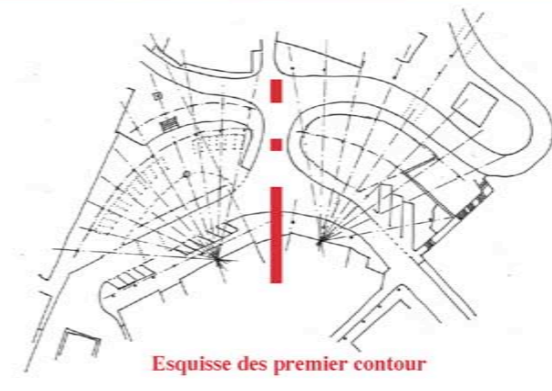
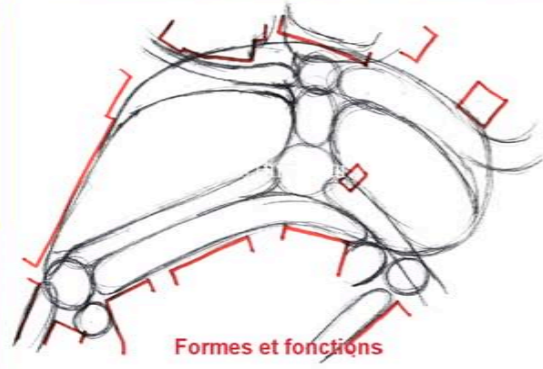
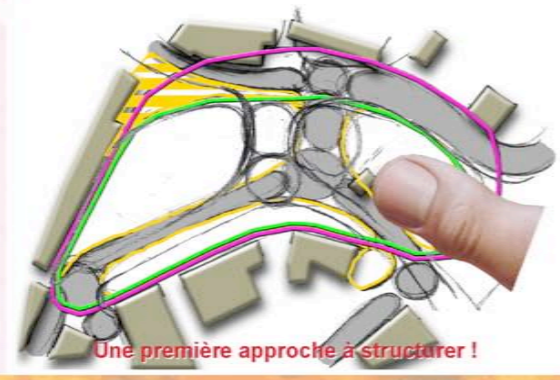
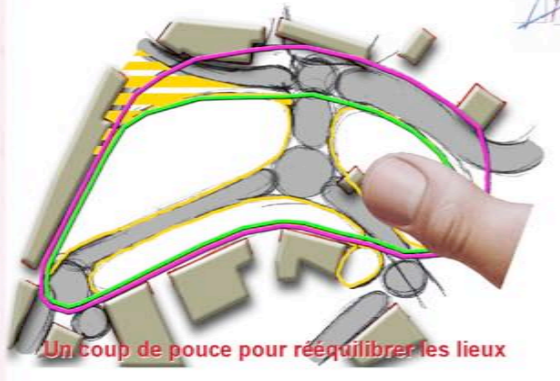
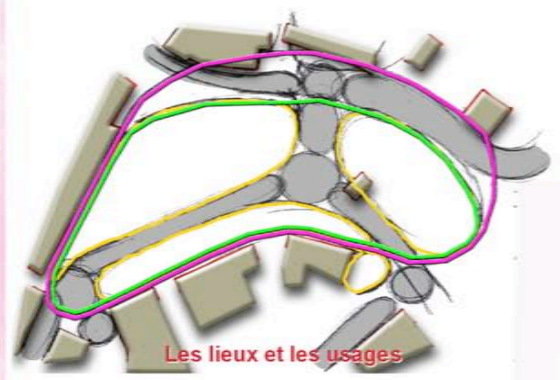
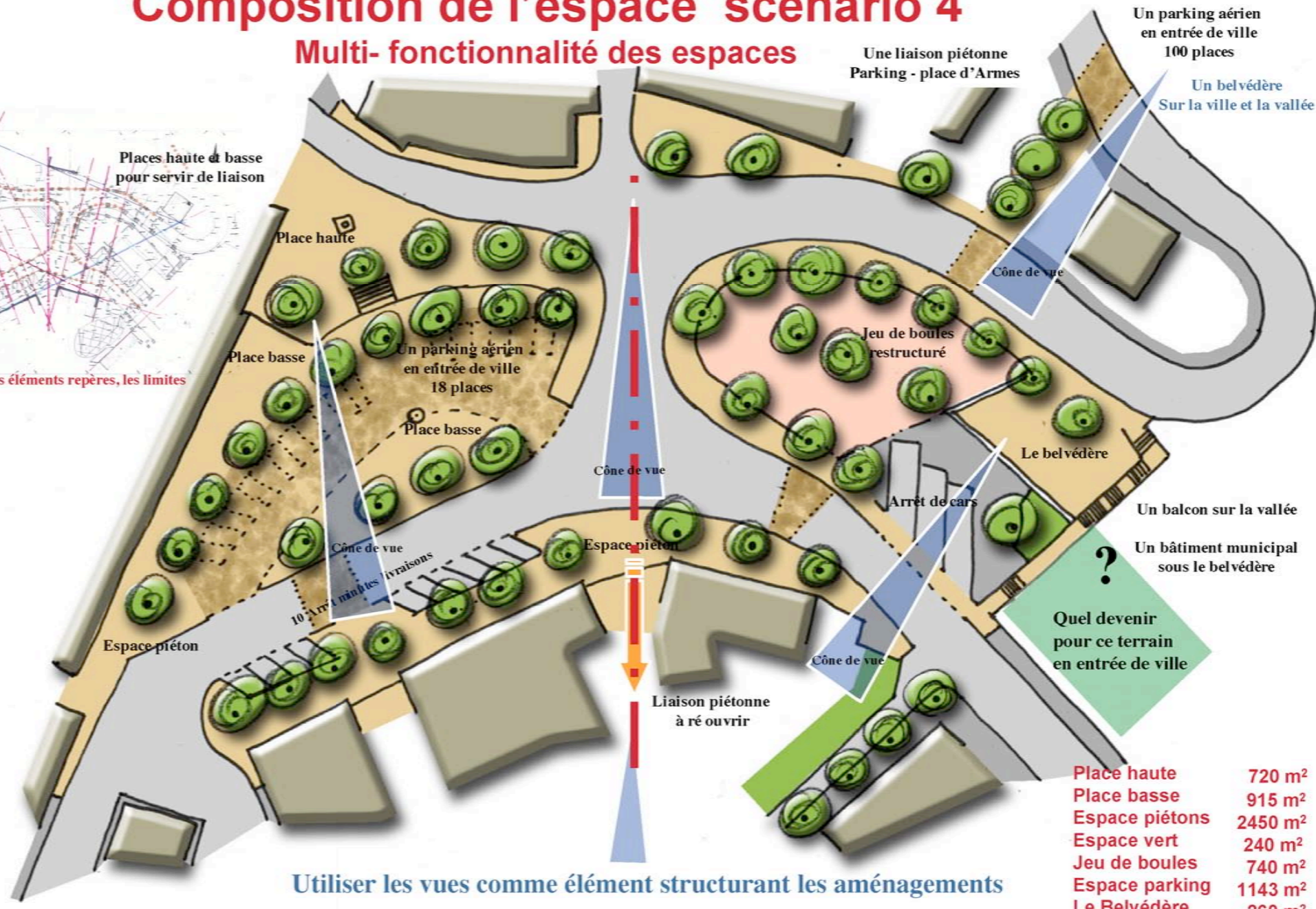
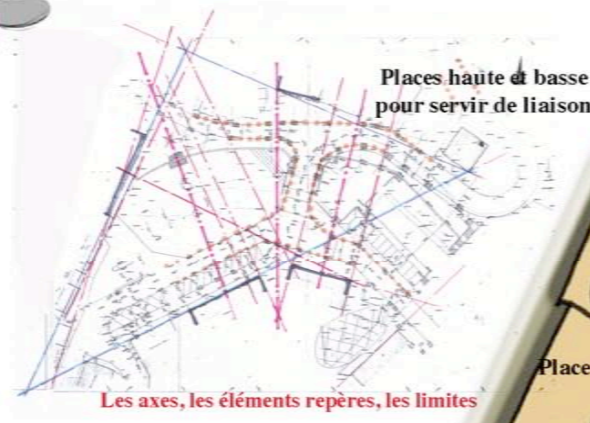


Schéma local d'aménagement



## Composition de l'espace scénario 4

Multi-fonctionnalité des espaces



Utiliser les vues comme élément structurant les aménagements

Place haute	720 m <sup>2</sup>
Place basse	915 m <sup>2</sup>
Espace piétons	2450 m <sup>2</sup>
Espace vert	240 m <sup>2</sup>
Jeu de boules	740 m <sup>2</sup>
Espace parking	1143 m <sup>2</sup>
Le Belvédère	260 m <sup>2</sup>